



EASTSIDE AND WESTSIDE SERVICE CENTER REMODEL PROJECT
Solicitation No. B-21-012-LE
Job No. 22-0109

ADDENDUM NO. 2
November 15, 2021

To Bidder of Record:

This addendum, applicable to work referenced above, is an amendment to the bidding documents and as such will be a part of and included in the Contract Documents. Acknowledge receipt of this addendum by entering the addendum number and issue date in the space provided in the submitted bid proposal.

RESPONSE TO QUESTIONS

1. Plan CODE-101 is missing per the Eastside Index.

Response: Please see #1 of changes to the specifications.

CHANGES TO THE SPECIFICATIONS

1. Eastside Service Center Plan Set, insert Code 101 after the cover page.

END OF ADDENDUM 2

This Addendum is two (2) pages in its entirety with the attachments.

Attachments:

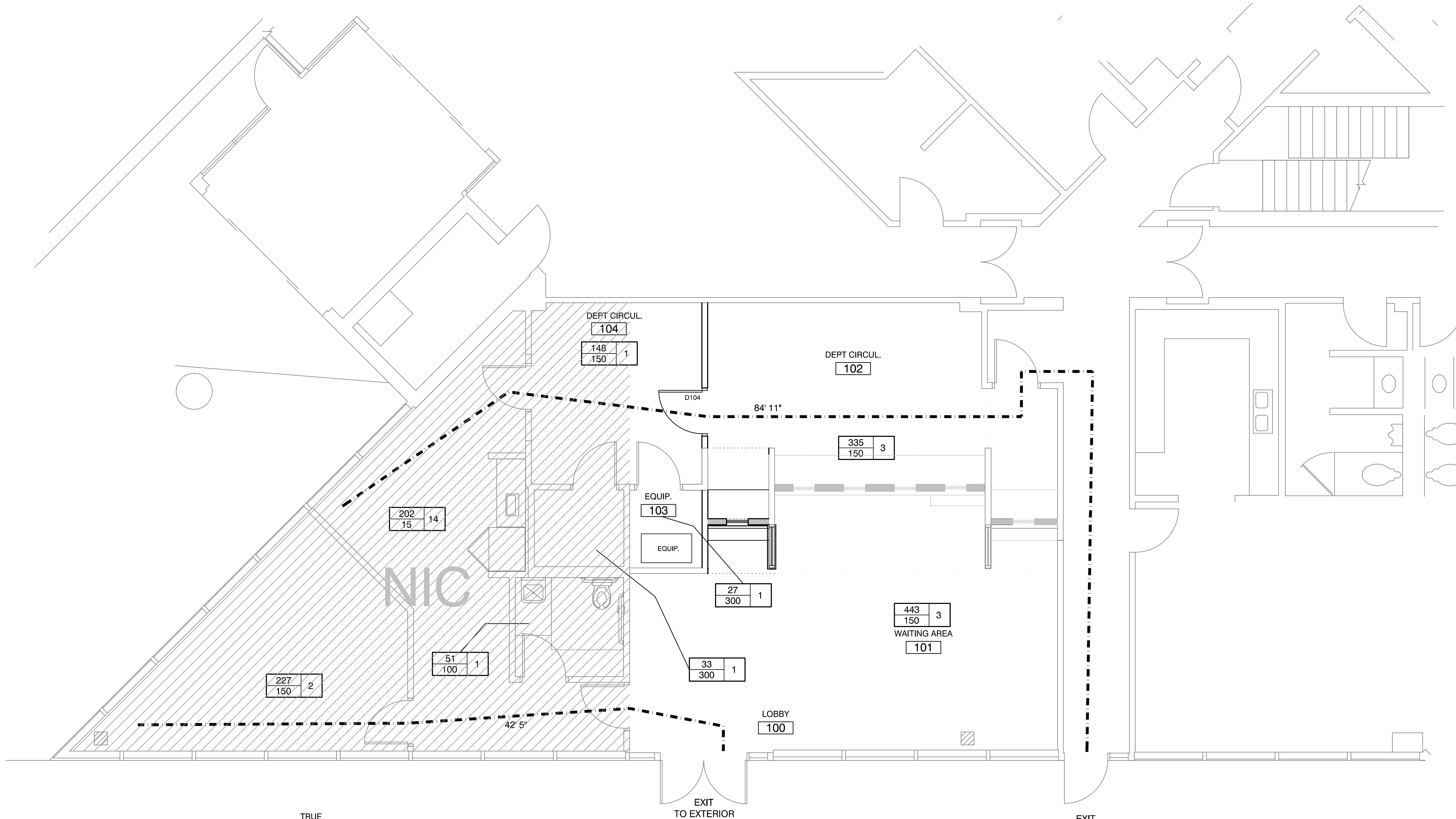
Eastside Service Center Code 101 (1 page)



11/15/2021



The user of this file agrees to assume all responsibility for any modifications to or use of this drawing file that is inconsistent with the requirements of the Rules and Regulations of the Texas Board of Architectural Examiners. Neither the printed document nor the digital media may be altered or amended without the express written permission of the named professional.



1 LIFE SAFETY PLAN
NEW CONSTRUCTION
1/4\"/>

LEGEND

SQUARE FOOTAGE	OCCUPANCY
OCCUPANCY LOAD	LOAD
FACTOR	

EGRESS INFORMATION:

TOTAL OCCUPANT LOAD = 26

- EXIT REQUIREMENTS
- 1 EXITS REQUIRED
 - 2 EXITS PROVIDED
 - 5.2' DOOR WIDTH REQUIRED (32\"/>
 - 96\"/>



Cashier Modifications

SAWS Eastside Customer Service
403 S WW White Rd
San Antonio, TX

revisions:



745 e mulberry ave suite 601
san antonio texas 78212
telephone: 210.733.3535
web: www.rvk-architects.com

construction documents

CODE-101
CODE PLANS